

# Introduction

**Q. WHY ARE WE HERE?**

**WSCAA**



Washington State  
Department of Transportation

# **Introduction**

**Q. WHY ARE WE HERE?**

**Airports can be divided into  
two general categories**

# Introduction

**Q. WHY ARE WE HERE?**

**Those that have had  
major land use compatibility  
problems...**

# **Introduction**

**Q. WHY ARE WE HERE?**

**Those that will!**

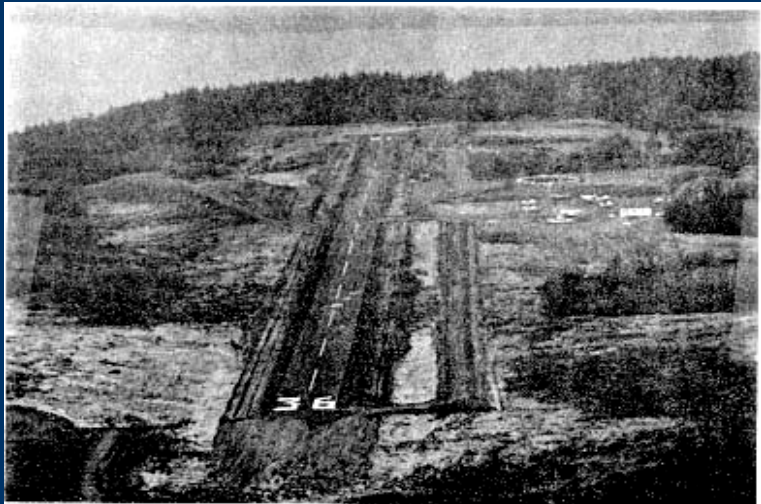
# **Introduction**

## **Q. WHY ARE WE HERE?**

**We are convinced of the need to...**

- 1. Get ahead of the problem**
- 2. Education – expand knowledge/awareness**
- 3. Increase dialogue**

# CONSEQUENCES



1974



1986



1995

# Introduction

## AIRPORT/COMMUNITY COMPATIBILITY

Not simply *airport protection*

*Cooperative endeavor  
Which recognizes both  
Airport and community needs*

# Introduction

*In many cases...*

*Disconnected planning processes  
City and county comprehensive plans  
&  
Airport plans*

*Different planners  
Different “languages”  
Different audiences  
Inadequate results*

# **Introduction**

**State-wide effort to...**

**Educate**

**Communicate**

**Coordinate**

**We start here – now - today**

## Introduction

**This is *not* a conference that will  
Answer all questions/solve all problems**

**It is a beginning  
We will build on it.**

# Session Topics

## WORKSHOP OVERVIEW

### LEGAL FRAMEWORK

#### Definitions

- Regulations
- Authority and jurisdiction
- Comprehensive planning
- Development regulations
- Zoning

# Session Topics

## WORKSHOP OVERVIEW

### AIRPORT PLANNING ELEMENTS

- **Inventory – existing conditions**
- **Forecasts**
- **Development alternatives**
- **Land use**
- **Zoning**

# Session Topics

## WORKSHOP OVERVIEW

### GROUP SESSION

**How can we improve “connections”  
between comprehensive community  
planning and airport planning?**

# **Session Topics**

**WORKSHOP OVERVIEW**

**THIS AFTERNOON**

**(STAN/MAGGIE)**

**AIRPORT ALND USE COMPATIBILITY  
PANEL DISCUSSION**

# Session Topics

## WORKSHOP OVERVIEW

### SATURDAY MORNING

#### PERSPECTIVES

- DEVELOPER
- CITY/COUNTY
- AIRPORT
- NEIGHBOR

# **Session Topics**

**WORKSHOP OVERVIEW**

**QUESTIONS AND ANSWERS**

**FUTURE EFFORTS**

**WRAP UP – 1:00**

# Session Topics

## WORKSHOP OVERVIEW

**John Shambaugh – WSDOT/AD**

**Terry Danysh - Dorsey**

**Jack McCullough – McCullough Hill**